

Asymmetric Error Bars on 10.1080/10717544.2024.2372285

Asymmetric error bars were observed on article [1].

10.1080/10717544.2024.2372285

5GH Foundation

DRUG DELIVERY  
2024, VOL. 31, NO. 1, 2372285  
<https://doi.org/10.1080/10717544.2024.2372285>



RESEARCH ARTICLE

OPEN ACCESS

Check for updates

Design of chitosan colon delivery micro/nano particles for an *Achillea millefolium* extract with antiproliferative activity against colorectal cancer cells

Maria de las Nieves Siles-Sánchez, Irene Fernández-Jalao, Laura Jaime De Pablo\* and Susana Santoyo\*  
Institute of Food Science and Research (CIAL), Universidad Autónoma de Madrid (CEI UAM + CSIC), Madrid, Spain

Figure 2: Asymmetric Error Bars (Red Arrows)

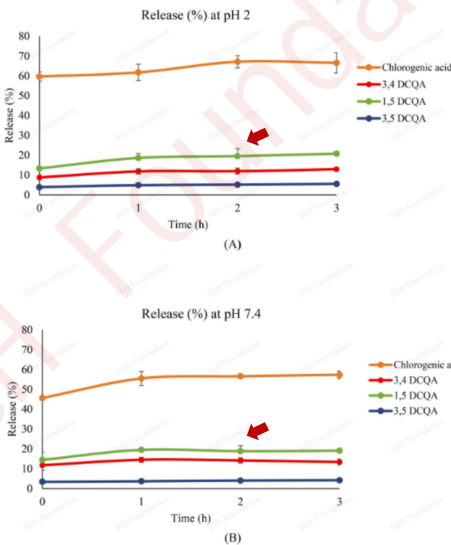


Figure 2. Amount (%) of phenolic compounds released after 5 min, 1, 2 and 3 h from particles obtained by ionic gelation at pH 2 (A) and pH 7.4 (B) (mean  $\pm$  SD,  $n=3$ ). Compounds such as luteolin derivative, luteolin 7-O-glucoside, luteolin 7-O-glucuronide, apigenin 7-O-glucoside, 4,5-DCQA, apigenin derivatives, luteolin and apigenin are not represented in the graph due to their 0% release.

[1] 10.1080/10717544.2024.2372285

---